

forecast CANCER



KIREN RAI

krai99@yahoo.com

The 2010 yearly horoscope for Cancer is full of exciting ventures or projects that will prove profitable. Your relationship with your partner will remain very positive. Mid-year could bring some minor ups and downs; however, the last quarter of the year will turn circumstances in your favour. Opportunities will arise that will finally facilitate your life towards a new direction. Relationships will also energise you, bringing a fresh impetus to your life. You need personal evolution, which will finally concretise during the coming year.



ARIES

21 March ~ 20 April

The Wheel of Fortune indicates a sense of great completeness and harmony. You experience completeness, and the unfolding future holds much promise. Fate spins off in new directions and chance presents new opportunities for those who seize them.



LIBRA

23 September ~ 22 October

The Ace of Swords shows the beginning of a situation which denotes great power, even excessive power at times, in both love and hatred. The Ace implies the use of such power to further one's ends, but what it does not imply is the manner in which those powers will be used, or the end that the means seek to achieve.

TAURUS

21 April ~ 20 May

The Six of Wands brings a close to the strife and competition of the past, so that you enjoy the spoils of victory. Though it is a purely physical victory that has been gained, not a spiritual one, it will be just as enjoyable.



SCORPIO

23 October ~ 21 November

The Eight of Pentacles is about improving projects and ventures, and draws attention to the need for meticulous attention. Now is not the time to be slipshod or casual. Look for errors and tie up loose ends. The key to success is gained by extraordinary effort, whatever your task may be. The Eight of Pentacles tells you to give it your all in every way.

GEMINI

21 May ~ 20 June

You will be influenced by The Empress, which is the female form associated with fertility, growth, abundance, knowledge, wealth, domestic stability and happiness. Now is the time for new ideas and initiative.

There will be rewards for endeavours; and happy family relationships, a marriage or a birth and luxury; creativity and contentment are all on the cards.



SAGITTARIUS

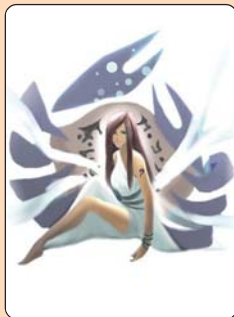
22 November ~ 21 December

The Two of Cups demonstrates love between two people, of finding common happiness and feelings for one another. The card is the harbinger of love, passion, friendship, affinity, union, concord, sympathy and an interrelation between the sexes. This month is also favourable for pleasure and business, love and wealth.

CANCER

21 June ~ 22 July

The Devil indicates that for some mysterious reason you have allowed your baser instincts to get in the way of your better judgement. The card cautions you to exercise self-control and to avoid distraction and over indulgence, and to keep your sights on your goals.



CAPRICORN

22 December ~ 19 January

With the World, completion and accomplishment appear at every level, as you reach the end of a cycle, and the fulfillment of your dreams. Sometimes, the World will herald a new home, a new place of work or travels. If change occurs in any area, be assured it is a change for the better and will only make you happier long term.

LEO

23 July ~ 22 August

The Ace of Wands is the initial burst of creativity and outpouring of energy that energises a project and inspires people to greatness. This is the spark that starts the fire, and is like a torch that can guide you to success. However, you must be willing to carry the torch with you as you travel along that winding stream to happiness. The Ace can light your way so you can make the correct choices yourself.



AQUARIUS

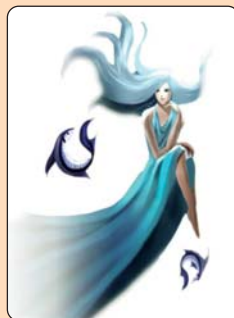
20 January ~ 18 February

The Page of Cups is Cupid, bringing you opportunities of love. You experience romance, deep feelings and a spiritual life. The card suggests that an opportunity may occur that will stir your emotions, pull at your heartstrings or bring you great joy. If that happens, act upon it.

VIRGO

23 August ~ 22 September

Temperance is the card of health, and its appearance shows that your inner power is ready to heal and make you stronger, finding the middle ground, showing moderation, maintaining balance and harmony. However, before you can achieve harmony in your relationships with the people around you, you must make peace with yourself.



PISCES

19 February ~ 20 March

The Magician indicates that if you want to accrue the greatest awards from your destiny, then you must become a magus of sorts to yourself. You have the intelligence, knowledge, strength and organisational skills to make your dreams come true. You are revitalised and remain unchallenged.